



At a glance...

FEATURES & BENEFITS



Easy to install

For wall-mounted displays, grid mesh is easily installed and can be positioned horizontally or vertically to suit your needs. Similarly free-standing displays are quick and simple to set up and provide an ideal mobile solution.



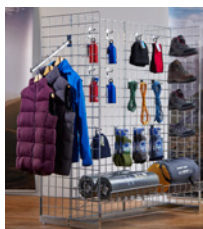
Extensive range of accessories

There is a wide range of coordinated grid mesh accessories to help display your merchandise at its best, including easy-to-attach shelves, hooks, arms and hanging rails.



Easy to manoeuvre

Our free-standing display units are light-weight and easy to transport making them perfect for exhibitions as well as retail displays. They come with either adjustable feet or castor wheels.



Flexible and modular solution

Whether you need a wall-mounted display, a storage solution or a mobile unit. Grid mesh has an option for you. And with a selection of matching panels, stands and bases you can expand your display as your requirements grow.



Hard-wearing wire display

Grid mesh comes with a durable, smooth chrome finish that's easy to keep clean. Being strong and sturdy, they can easily hold heavier items, and are built to withstand the demands of commercial use.



Stylish looks, practical design

Our grid mesh units combine contemporary looks with practical design. The chrome finish will really make your products stand out, whilst the easy-to-use design helps you to set-up and dismantle your displays more efficiently.

NEED MORE INFORMATION?

CALL 0800 834 782 | **EMAIL** sales@shopfittingwarehouse.co.uk

Display and Storage for you
shopfittingwarehouse.co.uk