



At a glance...

FEATURES & BENEFITS



Various finishes and colours

Tailor the barriers to your exact requirements, with brushed stainless-steel, polished stainless-steel and black matt finishes, and three stunning colour options for the webbing.



Easy to assemble

Assembling our barriers is quick and simple, saving you valuable time. Just one bolt is required to fix each post and with fast 'slide-on' webbing, setting up or putting away will take no time at all.



Lockable clip to secure webbing

The retractable posts come with a simple 'locking' feature for the webbing that prevents accidental release, but also allows for quick removal of the webbing when packing the barriers away.



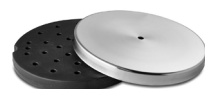
High-quality materials

The durable stainless steel construction and high-quality manufacture ensures that the barriers are long-lasting and stand up to commercial use.



Multi-directional

Our barriers are designed to allow up to four additional posts to be connected together. Creating a line of multiple posts is easy with individual or multiple posts available if you need to extend.



Weighted base with removable cover

The weighted base and low centre of gravity provides stability. The stainless-steel covers are removable if they need replacing. The non-scratch base prevents damage to the surface they are on.

NEED MORE INFORMATION?

CALL 0800 834 782 | **EMAIL** sales@shopfittingwarehouse.co.uk | **ONLINE** at www.shopfittingwarehouse.co.uk