



*At a glance...*

## FEATURES & BENEFITS



### Various finishes and colours

Tailor the barriers to your exact requirements, with brushed or polished stainless-steel finishes, a choice of twisted or velvet ropes and three stunning colour options.



### High-quality finish

The durable stainless steel construction and high-quality manufacture ensures that the barriers are long-lasting and stand up to commercial use.



### Multi-directional

Our barriers are designed to allow up to four additional posts to be connected together. Creating a line of multiple posts is easy with individual or multiple posts available if you need to extend.



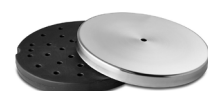
### Easy to assemble

Assembling our barriers is fast and simple, saving you valuable time. Just one bolt is required to fix each post and with quick 'clip-on' ropes, setting up or putting away will take no time at all.



### Quick 'clip-on' hooks

Each rope comes with two 'clip-on' hooks. With a coordinated chrome finish, these hooks give a premium feel whilst allowing simple attachment to the posts.



### Weighted base with removable cover

The weighted base and low centre of gravity provides stability. The stainless-steel covers are removable if they need replacing. The non-scratch base prevents damage to the surface they are on.

**NEED MORE INFORMATION?**

**CALL** 0800 834 782 | **EMAIL** [sales@shopfittingwarehouse.co.uk](mailto:sales@shopfittingwarehouse.co.uk) | **ONLINE** at [www.shopfittingwarehouse.co.uk](http://www.shopfittingwarehouse.co.uk)