

LED Lighting for Retail Shelving

Specification

Item	Size	Lumen	Voltage	Power	Colour
Light fitting for 1000 mm Shelf	950 mm	936 LM	24 V	12.9 W	White 6500 k
Light fitting for 1250 mm Shelf	1150 mm	1170 LM	24 V	15.7 W	White 6500 k
Light Track	1800 mm				White
Starter Driver				75 W	White
Follow-on Driver				75 W	White

Contents

Item	Light Fitting	Light Track	Starter Driver	Mains Cable	Item	Light Fitting	Light Track	Follow-on Driver	Connecting Cable
1-Shelf Starter Kit	1	1	1	1	1-Shelf Add-on Kit	1	1	1	1
2-Shelf Starter Kit	2	1	1	1	2-Shelf Add-on Kit	2	1	1	1
3-Shelf Starter Kit	3	1	1	1	3-Shelf Add-on Kit	3	1	1	1
4-Shelf Starter Kit	4	1	1	1	4-Shelf Add-on Kit	4	1	1	1
5-Shelf Starter Kit	5	1	1	1	5-Shelf Add-on Kit	5	1	1	1

Warnings

- A maximum of 5 x 1000 mm Light fittings can be fitted to each Starter or Add-on Driver
- A maximum of 4 x 1250 mm Light fittings can be fitted to each Starter or Add-on Driver
- A maximum of 4 x Follow-on Drivers can be connected to each Starter Driver
- If in any doubt, please consult a qualified electrician
- We recommend the lighting kits are protected by an RCB trip switch
- When assembling the lighting kits, always fully fit together the components before switching on the mains power.
- Do not expose any of the components to water.
- If for any reason the lighting should fail, do not attempt to take apart any of the sealed components.
- Do not insert fingers into the lighting track when the mains electricity is turned on.
- Do not use the lighting system if any components are damaged. Replacements can be purchased upon request.
- Do not allow children to play with the lights.
- Protect the power cable from being pinched or walked on.
- Do not expose the lighting system to extreme temperatures.
- Do not use in extreme heat.
- If using in cold conditions, do not use if condensation develops.

LED Lighting for Retail Shelving

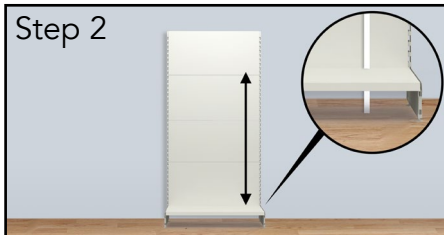
LED Starter Kit

Step 1



If the Light Track is too long for the unit, it can be trimmed. Begin by removing the End Cap.

Step 2



Measure and cut the Light Track to the desired height. (Ensure the track fits below the base shelf)

Step 3



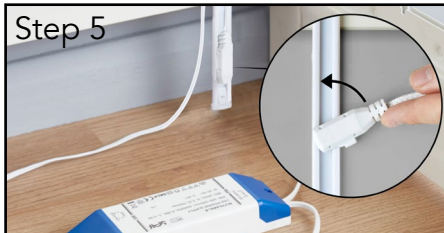
Replace the End Cap.

Step 4



Position the Light Track in the desired location. This can be to the left- or right-hand side as required.

Step 5



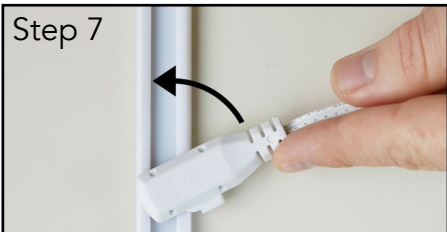
Connect the Starter Driver to the Light Track (position below the base shelf) and 'rotate' to lock into place.

Step 6



Fit the first shelf onto the unit. Attach the Light Fitting in the desired position underneath the shelf.

Step 7



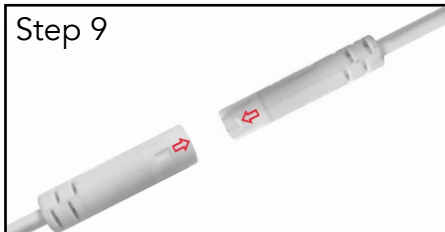
Connect the Light Fitting plug to the Light Track and 'rotate' to lock into place.

Step 8



Repeat steps 6 and 7 for each shelf.

Step 9



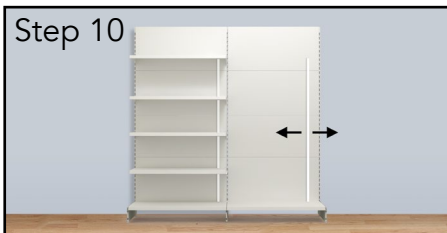
If not already connected, attach the Mains Cable to the Starter Driver. Ensure 'arrows' match up.

Connect the Mains Plug to a Standard UK 13-amp Socket and switch on.

Or... If you need to connect Follow-on Kits, go to step 10.

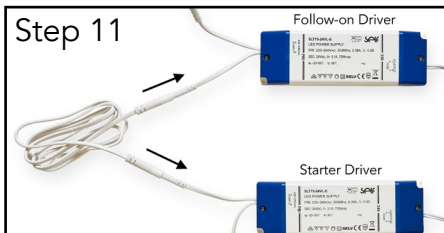
LED Follow-on Kit

Step 10



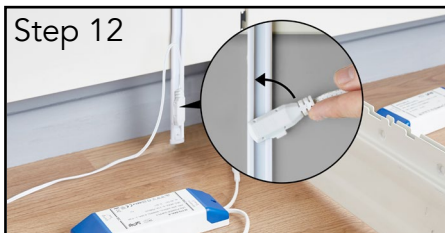
Build the next unit. Position the Light Track in the desired location.

Step 11



Connect the Follow-on Driver and Starter Driver using the connecting cable. Again, ensure 'arrows' match up.

Step 12



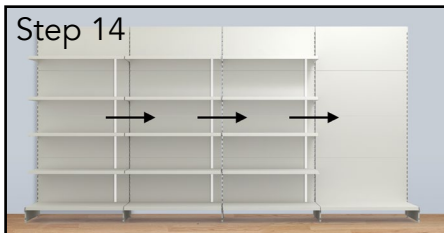
Connect the Follow-on Driver to the unit's Light Track and 'rotate' to lock into place.

Step 13



Repeat steps 6 and 7 for each shelf.

Step 14



Repeat steps 10 to 13 for each additional unit.

Connect Mains Plug to a Standard UK 13-amp Socket and switch on.