
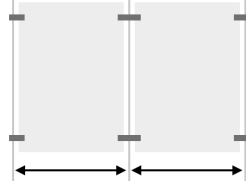
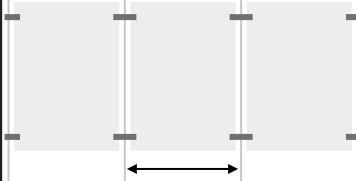


## Contents

Cable Kit Size	Top Fixings	Bottom Fixings	Cable	Single Panel Clips	Double Panel Clips	Poster Holders
W1 x H1	2	2	2 x 2 m	4	0	1
W1 x H2	2	2	2 x 2 m	8	0	2
W2 x H1	3	3	3 x 2 m	4	2	2
W2 x H2	3	3	3 x 2 m	8	4	4
W3 x H1	4	4	4 x 2 m	4	4	3
W3 x H2	4	4	4 x 2 m	8	8	6
W4 x H1	5	5	5 x 2 m	4	6	4
W4 x H2	5	5	5 x 2 m	8	12	8

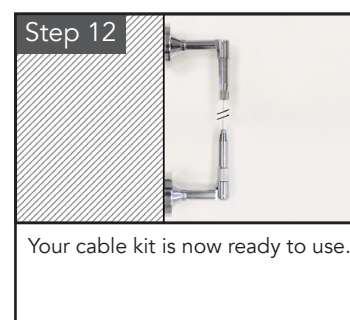
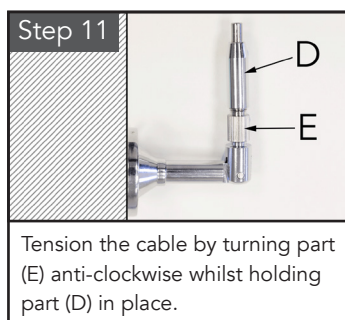
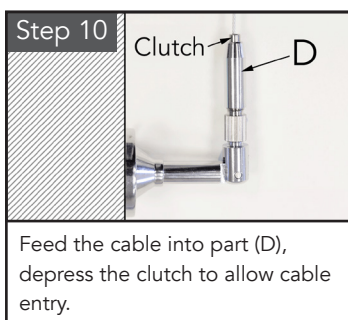
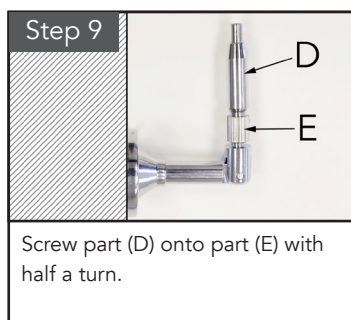
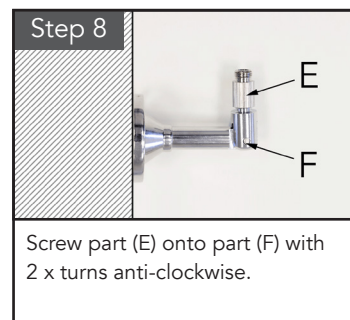
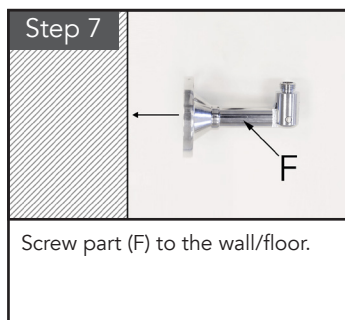
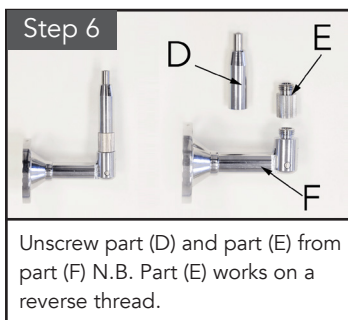
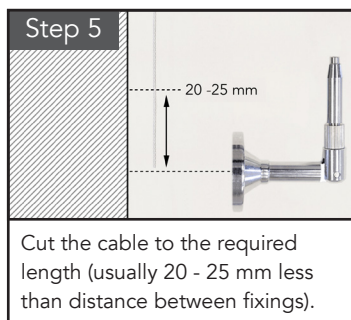
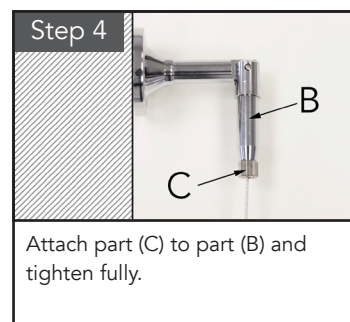
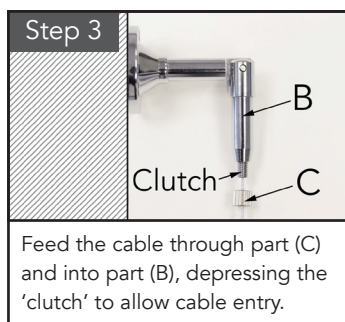
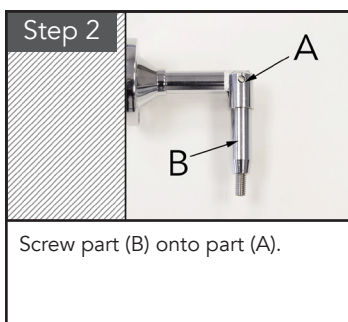
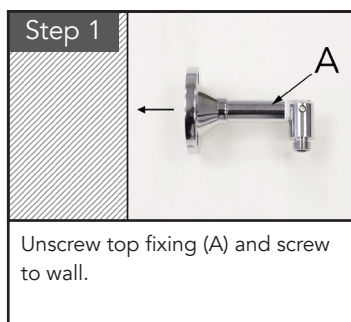
## Cable Distances for Poster Holders

Poster Holder Size	Distance Between Outer Cables (1 Wide)	Distance Between Outer & Inner Cables (2 Wide)	Distance Between Inner Cables (3 or More Wide)
			
A5 Portrait	161 mm	162 mm	162 mm
A4 Portrait	223 mm	224 mm	224 mm
A4 Landscape	310 mm	311 mm	311 mm
A3 Portrait	310 mm	311 mm	311 mm
A3 Landscape	433 mm	434 mm	434 mm
A2 Portrait	426 mm	427 mm	427 mm
A2 Landscape	600 mm	601 mm	601 mm
A1 Portrait	600 mm	601 mm	601 mm

## Warnings

- Please choose fixings suitable for the surfaces you are attaching the cable kit to.
- If you are in any doubt, consult a qualified professional.
- Where stated, all measurements are approximate.
- Acrylic items should only be cleaned with a duster or a clean dust-free cloth.
- NEVER use detergents or other cleaning products as this can adversely affect the acrylic material.

## Wall-Mount Fittings



## Poster Holders

