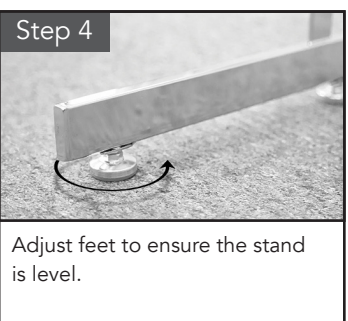
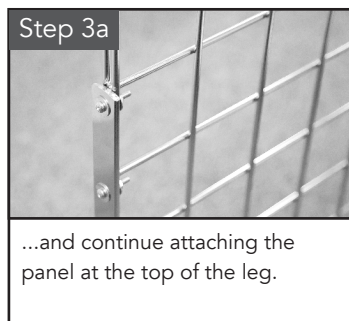
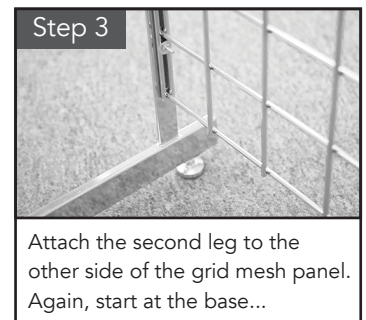
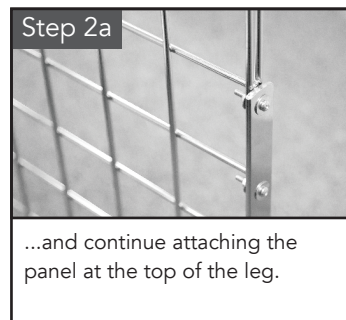
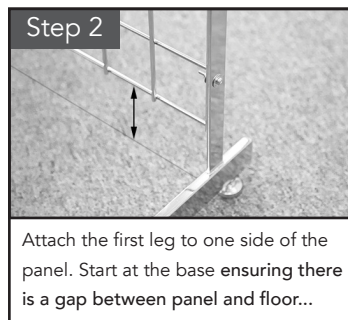
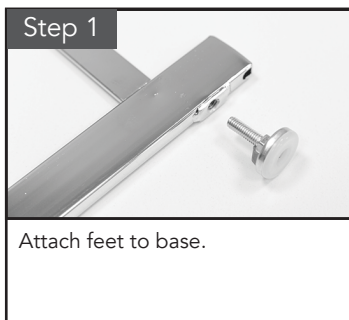


Contents

Standard 'L' Legs	Grid Mesh Panel	Feet	Nuts	Bolts	Washers
2	1	4	6	6	12

Instructions



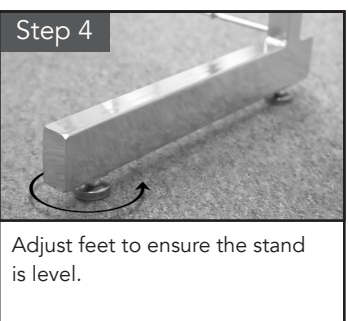
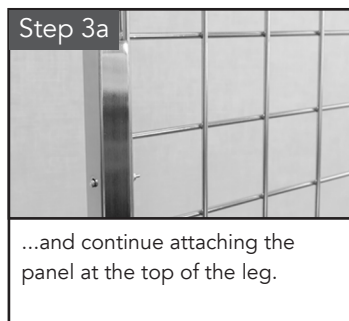
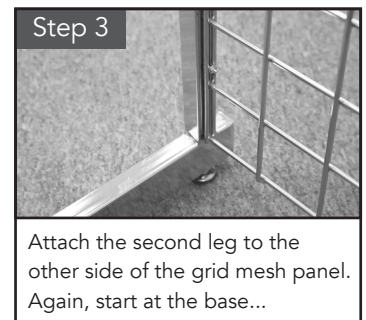
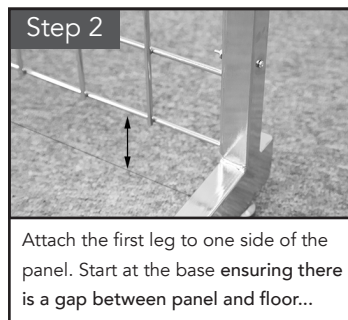
Warnings

- Read these instructions thoroughly before commencing assembly & retain for future reference
- Before commencing assembly check that all components are included.
- Assembly should be undertaken by two competent people.
- Allow for adequate working space during assembly.
- Try to load heavier items at the base of the stand and lighter items at the top.

Contents

Heavy-Duty 'L' Legs	Grid Mesh Panel	Feet	Nuts	Bolts	Washers
2	1	4	6	6	12

Instructions



Warnings

- Read these instructions thoroughly before commencing assembly & retain for future reference
- Before commencing assembly check that all components are included.
- Assembly should be undertaken by two competent people.
- Allow for adequate working space during assembly.
- Try to load heavier items at the base of the stand and lighter items at the top.

Contents

Standard 'T' Legs	Grid Mesh Panel	Feet	Nuts	Bolts	Washers
2	1	4	4	4	8

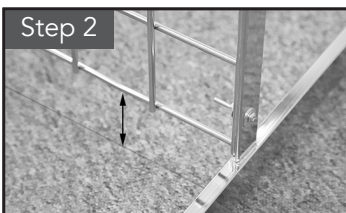
Instructions

Step 1



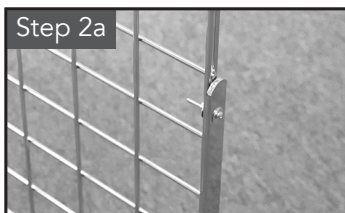
Attach feet to base.

Step 2



Attach the first leg to one side of the panel. Start at the base ensuring there is a gap between panel and floor...

Step 2a



...and continue attaching the panel at the top of the leg.

Step 3



Attach the second leg to the other side of the grid mesh panel. Again, start at the base...

Step 3a



...and continue attaching the panel at the top of the leg.

Step 4



Adjust feet to ensure the stand is level.

Step 5



Add your accessories and position the stand to maximise your products.

Warnings


- Read these instructions thoroughly before commencing assembly & retain for future reference
- Before commencing assembly check that all components are included.
- Assembly should be undertaken by two competent people.
- Allow for adequate working space during assembly.
- Try to load heavier items at the base of the stand and lighter items at the top.

Contents

Heavy-Duty 'T' Legs	Grid Mesh Panel	Feet	Nuts	Bolts	Washers
2	1	4	4	4	8

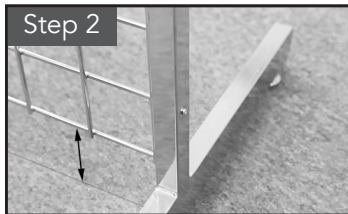
Instructions

Step 1



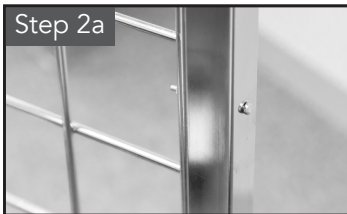
Attach feet to base.

Step 2




Attach the first leg to one side of the panel. Start at the base ensuring there is a gap between panel and floor...

Step 2a




...and Continue attaching the panel at the top of the leg.

Step 3



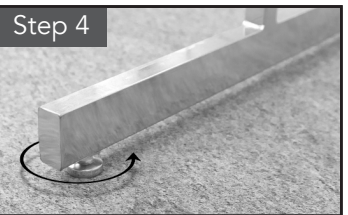
Attach the second leg to the other side of the grid mesh panel. Again, start at the base...

Step 3a




...and continue attaching the panel at the top of the leg.

Step 4



Adjust feet to ensure the stand is level.

Step 5



Add your accessories and position the stand to maximise your products.

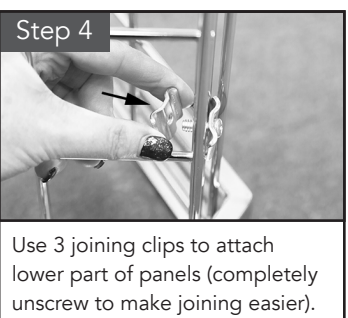
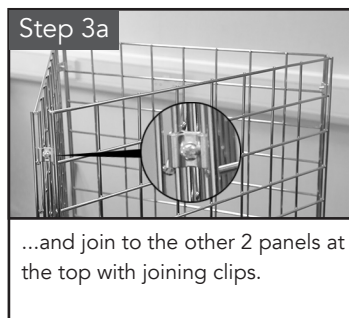
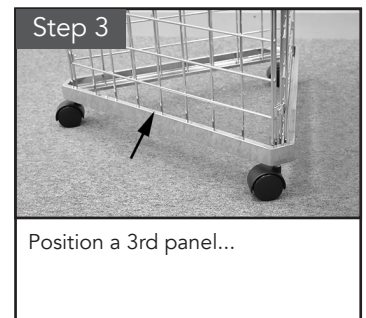
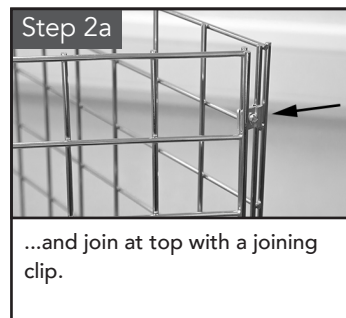
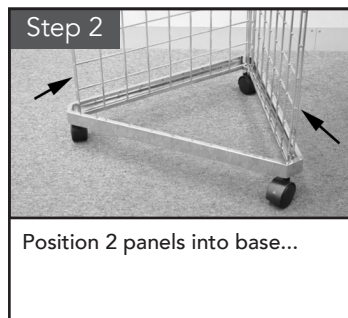
Warnings

- Read these instructions thoroughly before commencing assembly & retain for future reference
- Before commencing assembly check that all components are included.
- Assembly should be undertaken by two competent people.
- Allow for adequate working space during assembly.
- Try to load heavier items at the base of the stand and lighter items at the top.

Contents

Triangular Base	Wheels	Grid Mesh Panels	Joining Clips
1	3	3	6

Instructions



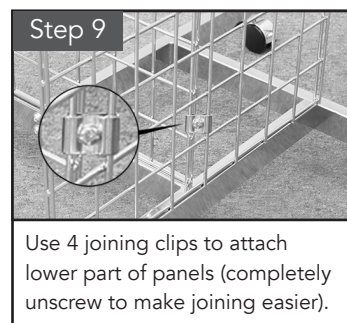
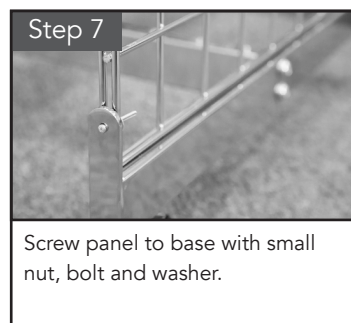
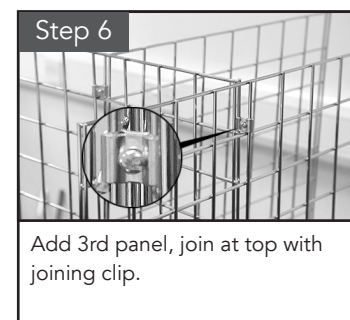
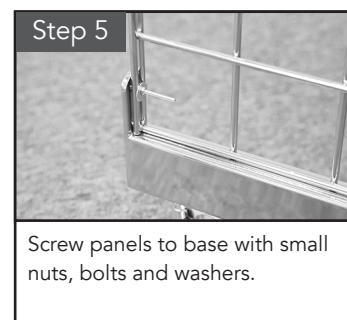
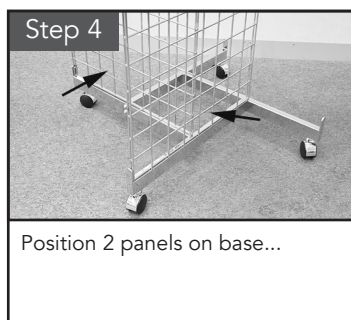
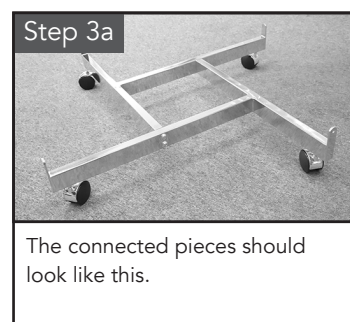
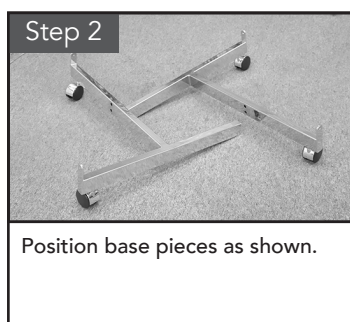
Warnings

- Read these instructions thoroughly before commencing assembly & retain for future reference
- Before commencing assembly check that all components are included.
- Assembly should be undertaken by two competent people.
- Allow for adequate working space during assembly.
- Try to load heavier items at the base of the stand and lighter items at the top.

Contents

Four Way Base	Wheels	Grid Mesh Panels	Joining Clips	Large Bolts	Small Bolts	Small Nuts	Large Washers	Small Washers	Split Washers	Allen Key
2 Pieces	4	4	8	4	4	4	4	4	4	1

Instructions



Warnings

- Read these instructions thoroughly before commencing assembly & retain for future reference
- Before commencing assembly check that all components are included.
- Assembly should be undertaken by two competent people.
- Allow for adequate working space during assembly.
- Try to load heavier items at the base of the stand and lighter items at the top.